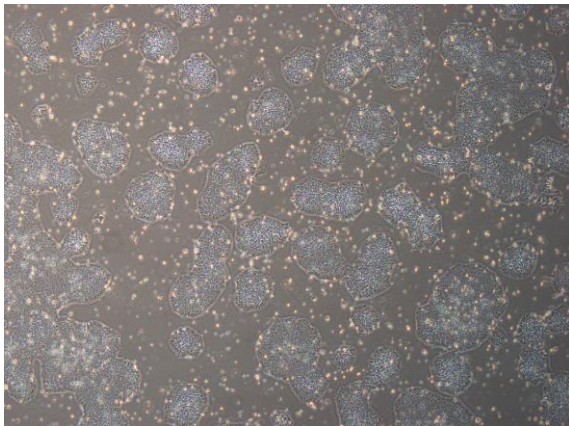
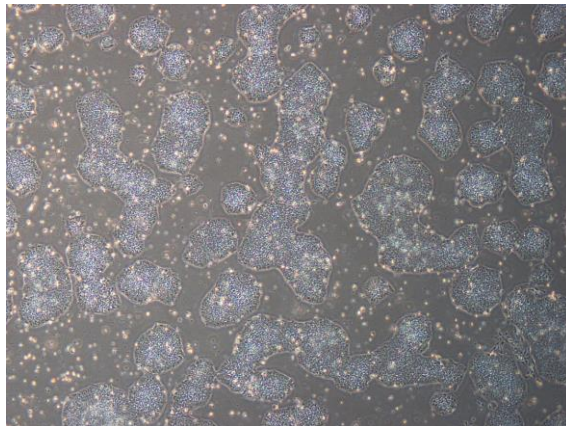


## 【 CiRA-j-1550 】 Morphology of iPSC colonies

CiRA-j-1550-A: passage-3



CiRA-j-1550-B: passage-3



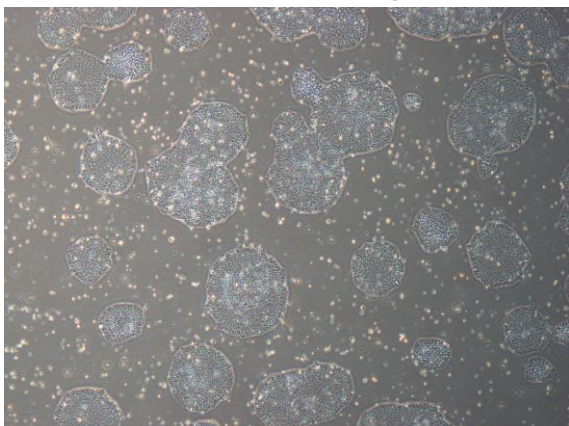
CiRA-j-1550-C: passage-3



CiRA-j-1550-D: passage-3



CiRA-j-1550-E: passage-3



CiRA-j-1550-F: passage-5



( All images were captured at 4x magnification )